

SIEM PEARL

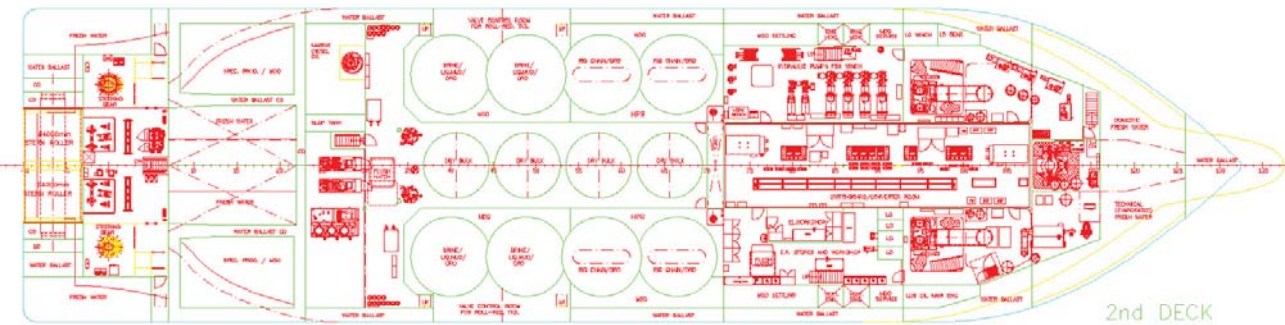
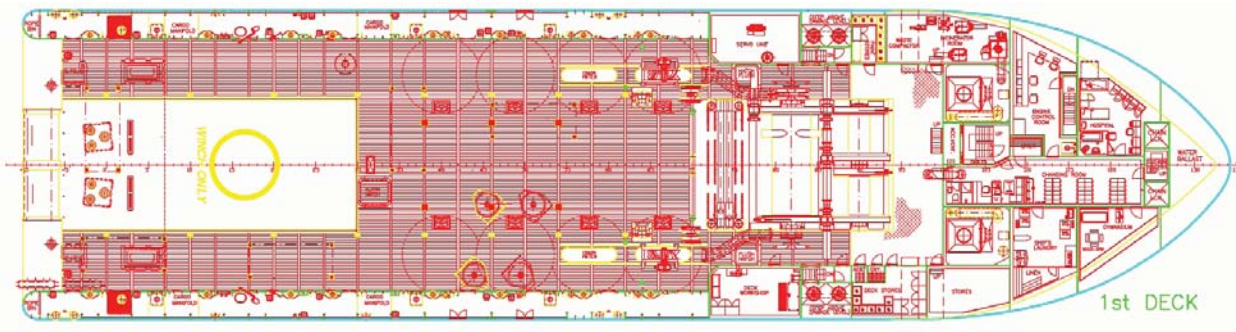
AHTS - VS491 CD / BUILT 2009, KLEVEN VERFT



SIEM PEARL

IMO NO 9417684

The vessel is a very large capacity Anchor Handling Tug Supply Vessel (AHTS) designed for towing and anchor handling, deep water inspection- and construction work, as well as to carry out regular supply and support duties for the offshore industry world wide. The vessel is of clean design, comfort class, environmentally friendly and optimized for low fuel consumption through hybrid diesel electric- and mechanical arrangement. Consequently, such arrangement together with superior hull lines and SCR give extreme low emissions. The vessel is designed for deep water- and ROV work equipped according to the latest industry requirements always focusing on HSE issues for efficient work and maximum safe protection for cargo and crew.



General

Delivery date	21-09-09
Builder	Kleven Verft, Norway
Build no	KV 327
Design	VS 491 CD
IMO	9417684
Flag	NOR
Class	DNV
ID-no	27779
Call Sign	LAQW
DP class	2
Ref. sys.	DGPS, Hipap, Fanbeam, Long Range Radius
Class notations	DnV +1A1, ICE - C, Tug, Supply Vessel, Oilrec, SF, EO, Dynpos-Autr, Clean Design, Naut-OSV (A), Comf-V(3), (C3), T-Mon, BIS, DK(+), HL(2.8)

HP	27 400 BHP
BP	285t

Main Particulars

LOA	91,00m
LPP	79,35m
Breadth	22,00m
Mean Moulded Draught	7,95m
Height to 1st deck	9,6m
Height to C-deck	19,0m
Height to Bridge deck	27,4m
Lightship displacement	6069,1t
Summer displ	10230t
Max DWT @ SLL (7,95 m)	4161t
Gross tonnage	7473t
Net tonnage	2241t
Accommodation	60

Speed & Consumption	Ideal cond
Harbour consumption	1t
Standby outside 500m zone	4t
Service Speed Economical	10 knt / 12t
Transit Service Speed -Medium	12 knt / 18t
Transit Service Speed -High	14 knt / 32t
Transit Full Speed (long duration)	16 knt / 60t
Max speed	18 knt / 72t
DP "Light"	6t
DP "Heavy"	20t
AH Condition	20-30t
Towing 50%	43t
Towing 80%	60t
Towing 100%	75t

Gypsies	Gypsies mm 2x76-2x84-1x90-1x120
Rig chain gypsies	Total 4x 165 m3
Chain lockers	(4x 2300m 76mm, 4x 2050m 84mm, 4x 1125m 105mm)

Tank Capacities	
Ballast water	2887,6m3 / 2959,8t
Fresh water	1071,8m3 / 1071,8t
Fuel oil	1223,8m3 / 1052,5t
Dry bulk	291,3m3 / 699,1t
Liquid mud	647,4m3 / 1812,7t
Rig chain lockers	649,1m3 / 665,3t
Alternative capacities for multi-purpose tanks:	
Brine / ORO	973,4m3
Liquid mud / ORO	1296,5m3
Base oil (Special product)	189,6m3
Wax Inhibitor	94,8m3

Engine and Propulsion		
Main Engines	2 x Wartsila 16V32, 2 x 8000 kW	2 x 10720 bhp @ 750rpm
Main Generators	2 x AA NIR 7188, 2 x 3400kW	@ 720rpm & 690V
Aux Engines GenSet	2 x CAT 3516C, 2 x 2100 kW	2 x 2814 bhp @ 1800rpm
Electric Propulsion engines (PTI)	2 x AA QD 560, 2 x 1600kW	2 x 2144 bhp @ 800rpm DE-mode
Propellers	2 x CPP LIPS ø4.2m	2 x 9215kW @ 144rpm
Bow Thrusters	2 x Tunnel Thruster, Brunvoll, 2 x 1000 kW	2 x 1340 bhp @ 273rpm
Bow Azimuth Thruster	1 x Azimuth Thruster, Brunvoll, 1 x 830 kW	1 x 1112 bhp @ 364rpm
Stern Thrusters	2 x Tunnel Thruster, Brunvoll, 2 x 880 kW	2 x 1179 bhp @ 280rpm

Winches & Wires

Anchor handling / Towing winch	Brattvaag SL500W3 – waterfall type
--------------------------------	------------------------------------

AH winch:

AH winch line pull	500t @ 16,7m/min (1st layer)
AH winch brake load	550t (first layer)
AH winch drum capacity	7700m ø76mm
AH Wire on board	2500m ø90mm

Tow/work winch:

Tow/work winch line pull	500t @ 17,5m/min (1st layer)
Work winch brake load	750t (first layer)
Tow/work winch drum capacity	2 x 4600m ø76mm
Tow Wire on board	1500m ø90mm
Work Wire on board	300m ø86mm

Secondary Winches:

Secondary Winch	2 x Brattvaag ALM63170U
Secondary Winch line pull	170t @ 23m/min (1st layer)
Secondary Winch Break load	200t dynamic breaking at 70m/min
Secondary Winches drum capacity	2 x 1600m ø203mm synthetic or 2 x 5000m ø76mm wire or 3100m ø160mm synthetic



AH Deck Equipment

Towing pins		RR, 2 x 250t SWL
Pop-up pins		RR, 2 x 220t SWL
Shark Jaws		RR, 2 x 800t SWL
Centering devise	RR, two triangular plates in a common box. Max reach 1.0m either side. Max 14.0t @ 100mm above deck	
Stern roller	Double Stern Roller: 2 x ø4000mm x 4000mm. 800t SWL on each roller	
Tugger winches		2 x 24t pull
Capstans		2 x 14t pull located
Spooling sheave	RR, ID ø1400mm, max ø90mm wire, max ø125mm chain. Max combined forces 100t.	
Pennant Coiler	RR. Hoist capacity: 8,0t pull @ 0-22 m/min 1st layer	

Cranes/Triplex MDH

Gantry Crane	Triplex MDH, Travelling gantry crane 42 t for safe anchor handling and cargo operations	4,75m opening underneath
Triplex MDH Palfinger	SWL 27,5t. Max radius 22,5m 2400 kg	
Triplex MDH Manipulator crane	SWL 2,0t @ radius 4,7m. Max swing radius 5,5 m	
Triplex MDH Winch	SWL max 22,0t. 72m ø32mm wire	
Triplex MDX Wire Clamp	ø60 - 100mm, clamping force 9t	
Deck crane STB	Hydramarine 3t@15m	
Deck crane PS	Hydramarine 10t@18m	

Cargo Capacity

Cargo deck area	813m ²	
Deck Length	45,2m	
Deck Breadth	18,0m	
Max deck load	1600t	
Deck strenght	10t/m ² (Fr26 to Fr70)	15t/m ² (Fr-5 to Fr25)

FRC

Mob Boat	MP Weedo 700 FRC	12 pers
----------	------------------	---------

Additional Equipment

Vessel can be fitted with ROV		Yes
Vessel can be fitted with A-frame	250T Double fall, 200T Single fall, 150T AHC	

Cargo Discharge pumps

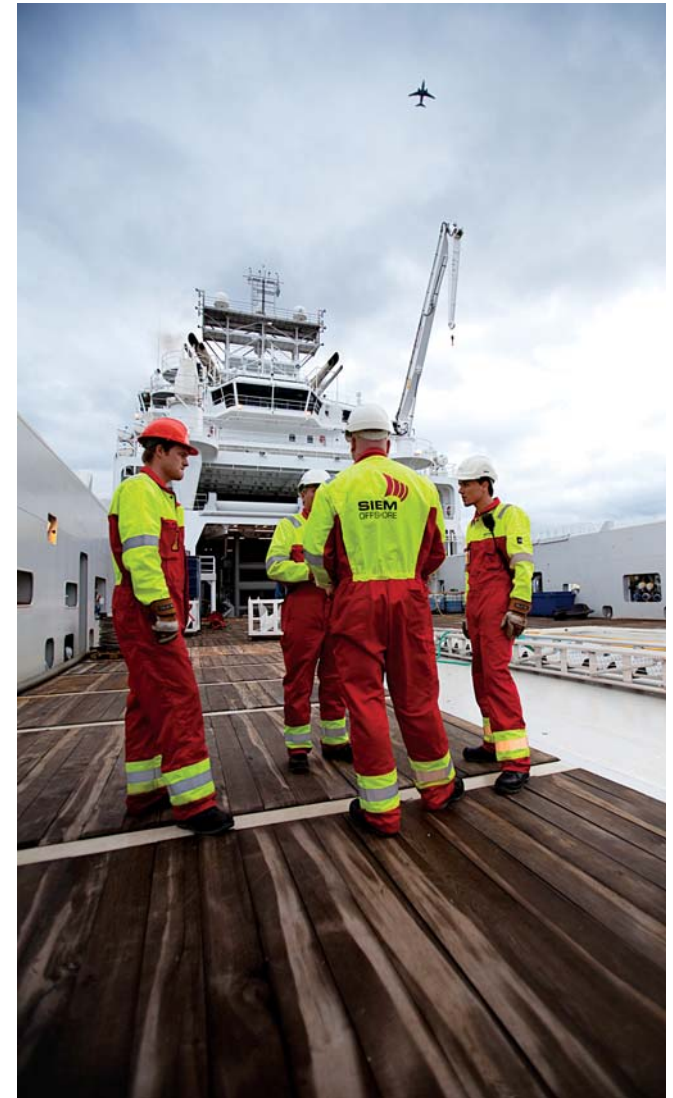
Drill water / Ballast water	2 x 150 m3/h
Fresh water	2 x 150m3/h
Fuel oil	2 x 150m3/h
Dry bulk compressors	2 x 27m3/min
Brine / ORO	2 x 100/125 m3/h
Liquid mud / ORO	2 x 100/125 m3/h
Special product (Base Oil)	1 x 75m3/h

Connections

Drill water	Weco 4" Female
Fresh water	Weco 4" Female
Fuel oil	Avery Hardoll 4"
Dry bulk	Weco 5" Female
Brine	Weco 4" Female
Liquid mud	Weco 4" Female
ORO	Weco 6" Female
Special product (Base Oil)	Avery Hardoll 4"

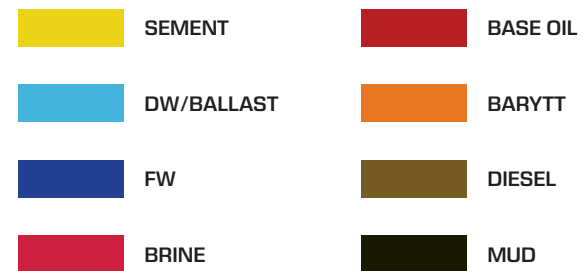
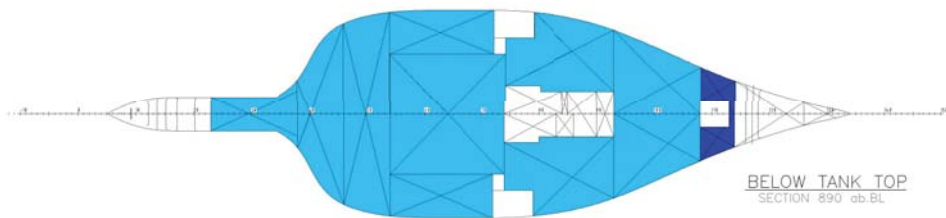
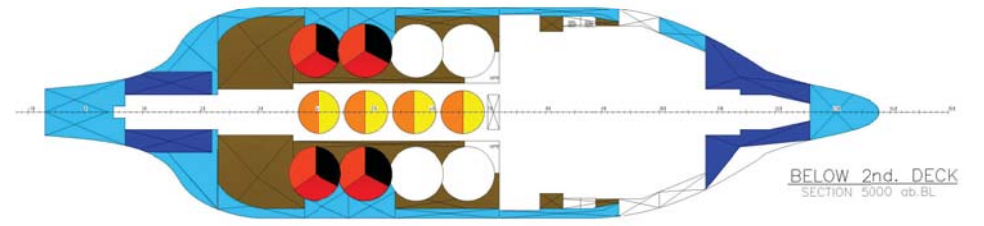
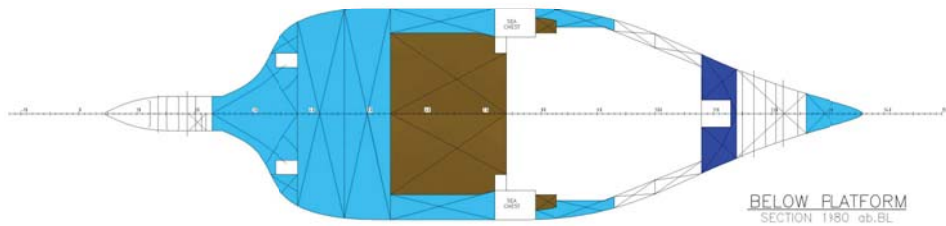
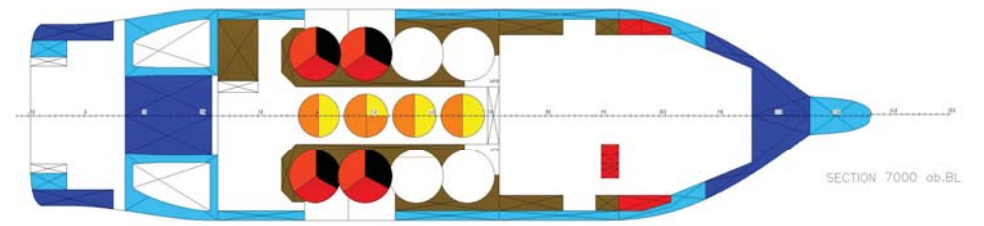
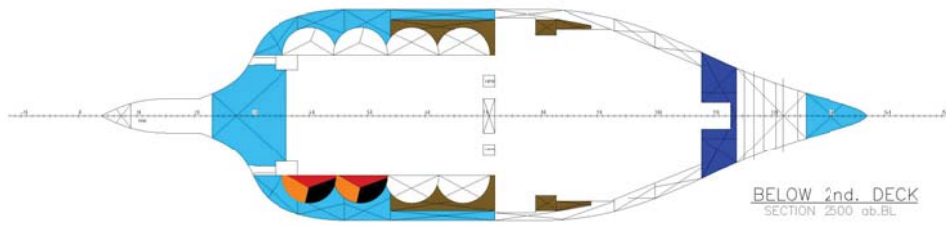
Accomodation

Total	60
Single cabins	20
Double cabins	20
Deck office	Yes
Hospital	Yes
Conference room	Yes
Gymnasium	Yes
Cooler rom	15m2
Freezer room	13m2



Particulars believed to be correct, without guarantee. Revision 01/07/2010

TANK CAPACITIES



TANK CAPACITIES			Water Ballast	Fresh Water	Diesel Oil	Dry Bulk	Liquid Mud	Rig Chain
Usually used SG for products (Tonnes per CBM)			1,025	1,000	0,860	2,400	2,800	1,025
Tank ID		M3	T	T	T	T	T	T
01C	FOREPEAK	234,1	239,9					
11P	SHIP	155,0		155,0				
12S	TECHNICAL	155,0		155,0				
13P	SHIP	122,3		122,3				
14S	TECHNICAL	122,3		122,3				
201P	DOUBLE	69,2	71,0					
202S	DOUBLE	68,4	70,1					
20P	WING	79,9	81,9					
26S	WING	40,3	41,3					
301P	DOUBLE	86,4	88,6					
302S	DOUBLE	86,4	88,6					
31P	WINGTANK	105,2	107,8					
32S	WING	105,2	107,8					
33P	MDO	23,1			19,9			
34S	MDO	23,1			19,9			
35P	MDO	58,3			50,1			
36S	MDO	58,3			50,1			
37P	EMGERCY	3,1			2,7			
401P	DOUBLE	160,4	164,4					
402S	DOUBLE	160,4	164,4					
403C	DOUBLE	157,9	161,9					
407P	MDO	85,4			73,4			
408S	MDO	85,3			73,4			
411C	DryBulkTK	72,8				174,8		
412C	DryBulkTK	72,8				174,8		
413C	DryBulkTK	72,8				174,8		
414C	DryBulkTK	72,8				174,8		
41P	MDO	94,9			81,6			
421P	RIG	161,5					165,5	
422S	RIG	161,5					165,5	

TANK CAPACITIES			Water Ballast	Fresh Water	Diesel Oil	Dry Bulk	Liquid Mud	Rig Chain
Usually used SG for products (Tonnes per CBM)			1,025	1,000	0,860	2,400	2,800	1,025
Tank ID		M3	T	T	T	T	T	T
423P	RIG	163,0						167,1
424S	RIG	163,0						167,1
425P	LIQ	163,1					456,7	
426S	LIQ	163,1					456,7	
427P	LIQ	160,6					449,7	
428S	LIQ	160,6					449,7	
42S	MDO	94,9			81,6			
43P	MDO	94,3			81,1			
44S	MDO	94,3			81,1			
45C	ROLL	299,8	307,3					
46C	ROLL	245,0	251,1					
501C	DOUBLE	198,0	203,0					
51P	WING	85,8	88,0					
52S	Wing	85,8	88,0					
53P	MDO, Special prod.	194,9			167,6			
54S	MDO, Special prod.	124,4			106,9			
601P	FW, TANK	184,6		184,6				
602S	FW, TANK	184,6		184,6				
61P	MDO	94,8			81,5			
62S	MDO	94,8			81,5			
65P	WB	199,0	204,0					
66S	WB	199,0	204,0					
71P	WING,TANK	74,1		74,1				
72S	WING,TANK	74,1		74,1				
73P	WB	110,7	113,4					
74S	WB	110,7	113,4					
TOTAL WEIGHTS			2959,8	1071,8	1052,5	699,1	1812,7	665,3
TOTAL VOLUME			2887,6	1071,8	1223,8	291,3	647,4	649,1
TOTAL US BBLs			18162,1	6741,3	7697,3	1832,2	4072,0	4082,6



Siem Offshore Inc

c/o Siem Offshore AS
Markensgate 8
4611 Kristiansand
Norway

Postal address:

P.O. Box 425
N-4664 Kristiansand S, Norway

Chartering Department:

Telephone:

+ 47 38 14 30 12

E-mail:

chartering@siemoffshore.com

www.siemoffshore.com

