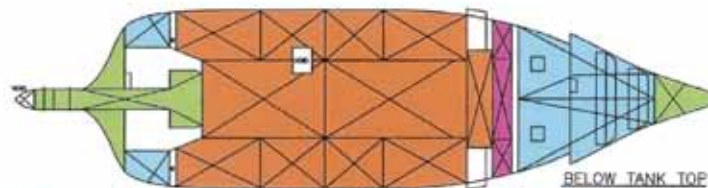
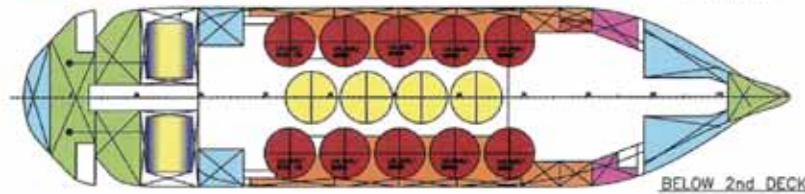
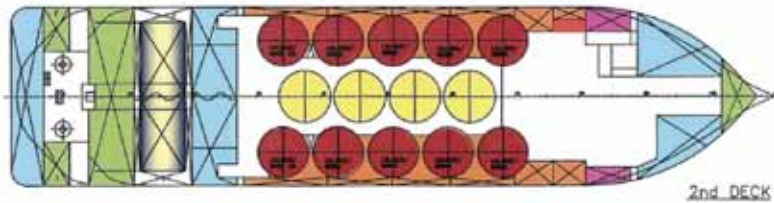
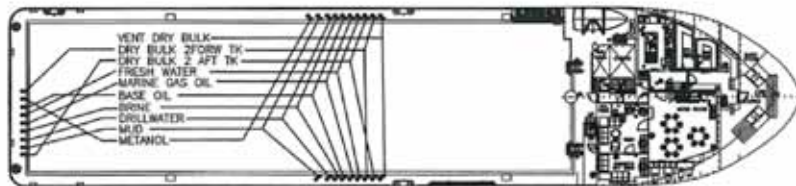
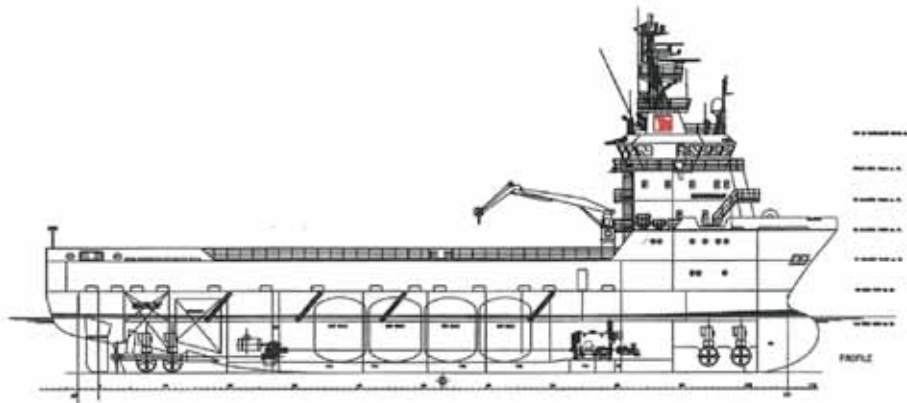


MV Sophie SIEM



SIEM
OFFSHORE



VS 470 MKII

General

The vessel is a Platform Supply Vessel designed to carry out regular supply functions and cargo transport for the oil industry as well as Standby functions. The vessel is designed with a well deck for maximum protection for cargo and crew.

Owner	Siem Offshore Rederi AS
Builder	Aker Langsten, Norway
Built	2006
Design	PSV VS 470 MK II
IMO No.	9334545
Call sign	JWLS3

Classification

DNV + 1A1, SF, EO, LFL*, DYNPOS AUTR, DK(+), FIFI 1

Flag

Norwegian

Certificates

World wide

1966 Loadline Conv., SOLAS, MARPOL

Main dimensions:

LOA	73.40 m
LPP	64.00 m
Breadth	16.60 m
Depth 1st deck	7.60 m
Draught scantling	(max) 6.42 m
Gross tonnage (1969 conv.)	2465 GT
Net tonnage	859 MT

Trial Speed

Speed	14 knots
-------	----------

CARGO CAPACITIES

General

10 tanks for mud and brine, two combined with base oil. All with tank washing system.

Capacities

Dead weight at	d=6.42 m 3555 t
Deck cargo capacity	1600 t
Cargo deck area	max 700 m2 usable 680 m ²
Cargo Deck Length & Beam	13,8m x 49,8 m
Fuel oil, total	1.070 m
Fresh water, total	752 m3
Ballast water/ drill water	745 m3
Dry bulk	340 m3
Liquid mud	1.070 m3
Brine	850 m3
Base oil	210 m3
Methanol	180 m3
Mezzanine deck for ROV(opt.)	210 m2

Liq. cargo discharge pumps

Fresh water	1 x 200 m3/h
Ballast-/drillwater and firewash	2 x 150 m3/h
Fuel oil	2 x 200 m3/h
Liquid mud	2 x 70 m3/h
Brine	2 x 70 m3/h
Brine oil	2 x 150 m3/h

SHIP EQUIPMENT

Manoeuvring systems and machinery

Two tunnel thruster fwd. rated	(MRC)2 x 588 kW
Two tunnel thruster, aft rated	(MRC) 2 x 588 KW
Fully integrated joystick control system	

DP System

One fully automatic DP system AUTR with redundancy in position reference and thruster control (DP-class 2)

Navigation & comm. equipment

Radio equipment Navigation equipment acc to SOLAS 74 as amended GMDSS A3 area Fleet 77

V-sat (voice & data)

Norw. mobil phones

Three gyrocompass

Two wind sensors

Two motion reference units

Two DGPS systems

One Fanbeam system

HiPap 500

Anchoring and mooring equipment

Two stockless, anchors, SPEK type

Two anchor windlasses/mooring winches

Two capstans aft

Deck cranes:

One crane 3 t at 12 m

Roll Reduction

One passive free-surface effect roll reduction tank

EQUIPMENT FOR CREW

Lifesaving equipment

Life-saving appliances according to SOLAS and NMD

Ventilation/A-C for accommodation

A high pressure, single pipe ventilation system with constant air volume and full heating and air conditioning throughout the accommodation

Sanitary system

Vacuum based sanitary system.

Accommodation

2 x 1 state cabins with separate bed and bathroom

4 x 1 man cabins with separate bathroom

6 x 2 men cabins with separate bathroom

4 x 4 men cabins with separate bathroom

One mess, one scullery, one dayroom

One office, one lobby, one Hospital

MACHINERY AND PROPULSION

Propeller

Two (2) controllable pitch propeller.

Propeller diameter approx.: 2900 mm

Number of blades (each) Four (4)

Speed of propeller approx. 185 RPM

Main diesel engines

Main diesel eng 2 x Caterpillar 3606

Rating 2 x 2030 BkW at 1000 RPM

All engines running on marine gas oil.

Motor aggregates

Two (2) diesel engines 2 x Caterpillar 3406

Rating 2 x 320 kW at 1800 RPM

All engines running on marine diesel oil.

Shaft generators

Two (2) shaft generators.

Output 1300 kW at 1200 RPM

Emergency generator

Rating 70 BkW at 1800 RPM

Voltage 3 x 440V, 60Hz

Central heating boiler

One oil fired, hot water boiler for central heating

Capacity 100 000 kcal/h



Siem Offshore Inc

c/o Siem Offshore AS
Nodeviga 14
4610 Kristiansand
Norway



Postal address:

P.O. Box 425
N-4664 Kristiansand S, Norway

Chartering Department:

Telephone:

+ 47 38 14 30 12



E-mail:

chartering@siemoffshore.com

www.siemoffshore.com

